

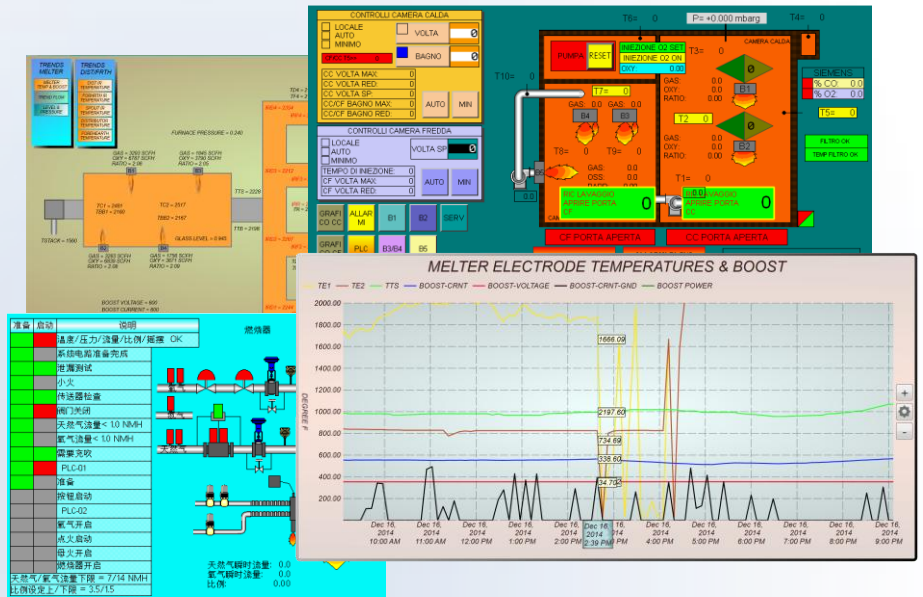


SCADA AND CONTROL SYSTEMS

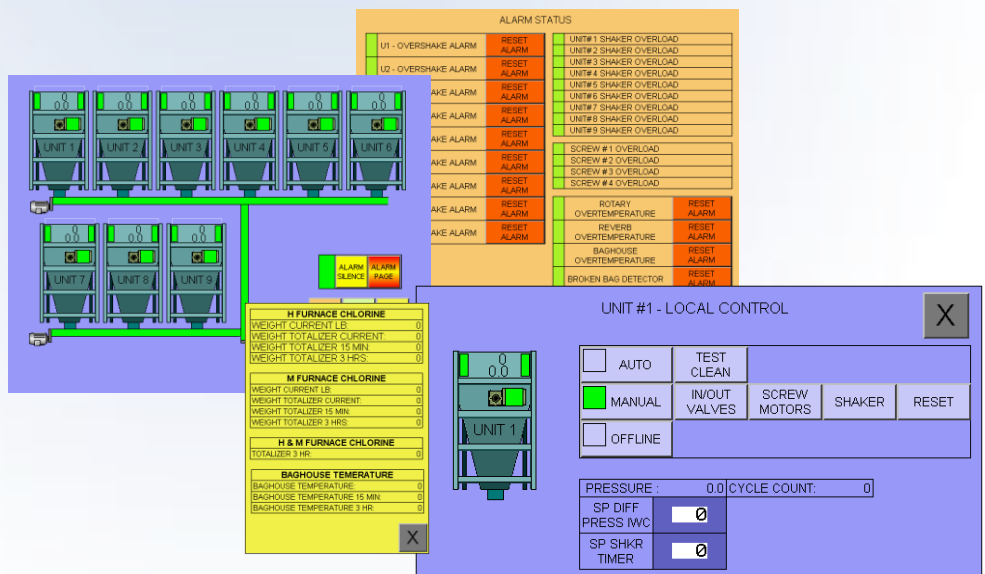
Xothermic, Inc. provides SCADA (Supervisory Control and Data Acquisition) paired with the right control hardware for a variety of applications. In its simplest form, data logging of system variables can be used for trend or chart displays, providing the means necessary to evaluate performance of equipment.

Combined with custom controls, some of the features SCADA can provide:

- process control
- data logging and display
- application/user specific HMI screens
- predictive failure and maintenance alarm indication/notification



COMPLETE FURNACE SYSTEM CONTROL WITH SCADA AND HMI SCREENS



BAGHOUSE REMOTE I/O WITH HMI SCREENS